



## Tampa's ACES Initiatives

---

Vik Bhide  
Smart Mobility Division

# Tampa Bay - Transportation Challenges

---

Growing Traffic  
Congestion



12<sup>th</sup> Worst in US

Urban  
Sprawl



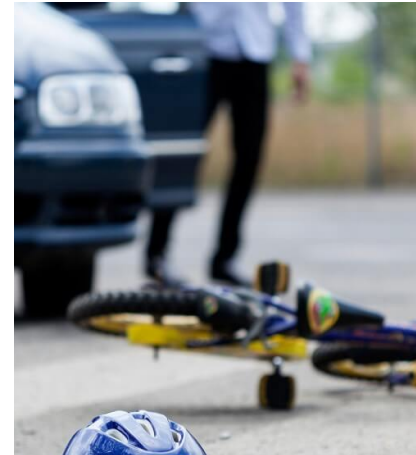
Long Commutes

Few Public  
Transit Options



Lack of Funding

Bike & Pedestrian  
Safety



#7 least safe City

Environmental  
Quality



A City on the Bay

# Smart City Tampa : ACES

---

- Context
- Current Projects
- Future Concepts



## AGENDA

# Smart City : ACES Context

---

- Urbanization
- Demographics
- Climate Change
- Safety
- Technology



# Key Technologies Enabling ACES

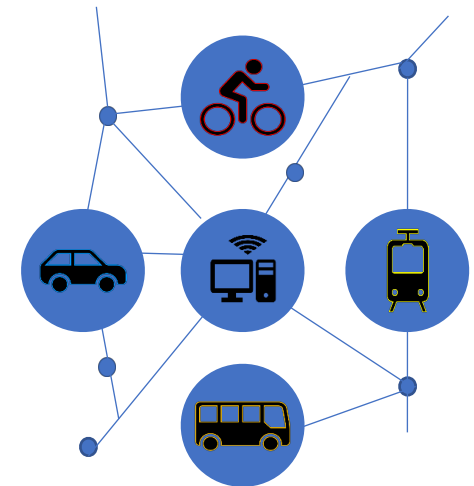
---

- IoT Sensors
- 5G Communications
- Faster Processors
- Artificial Intelligence
- Shared Mobility Services
- Battery & Solar Tech



# Mobility as a Service (MaaS)

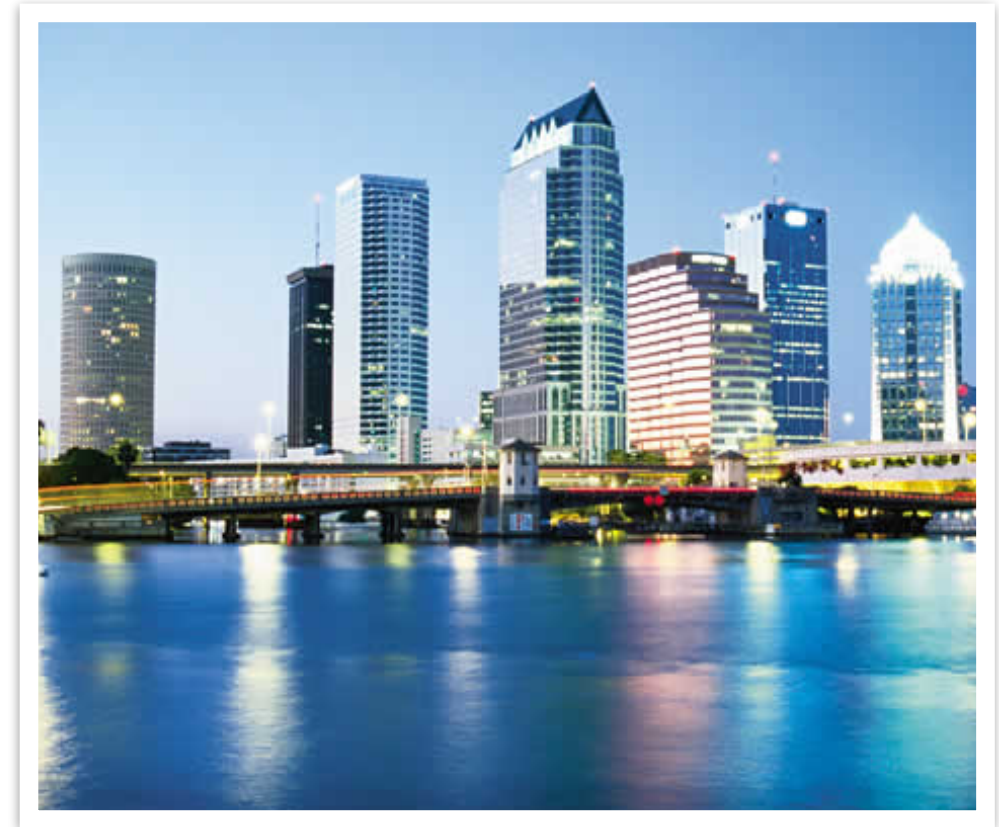
- Significant Investment in Mobility Services
- **Cost/mile - \$0.35 AV vs \$0.7 personal cars**
- User-focused mobility packages – more choices
- Safer, more efficient, greener roads



# Goals

---

- Competitive Advantage
- Quality of Life
- Pedestrian & Bicycle Safety
- User-Focused Services
- Congestion Mitigation
- Vulnerable Communities
- Resiliency
- Port & Airport Operations & Security



# Tampa Bay Smart Cities Alliance

---

- Public, Private, Academic Alliance
- Focus Areas
  - *Mobility as a Service*
  - *Regional Data Platform*
  - *Reimagining Infrastructure*
- USF - Tampa MOU
- CUTR - Smart Mobility Lab
- MetroLab Network





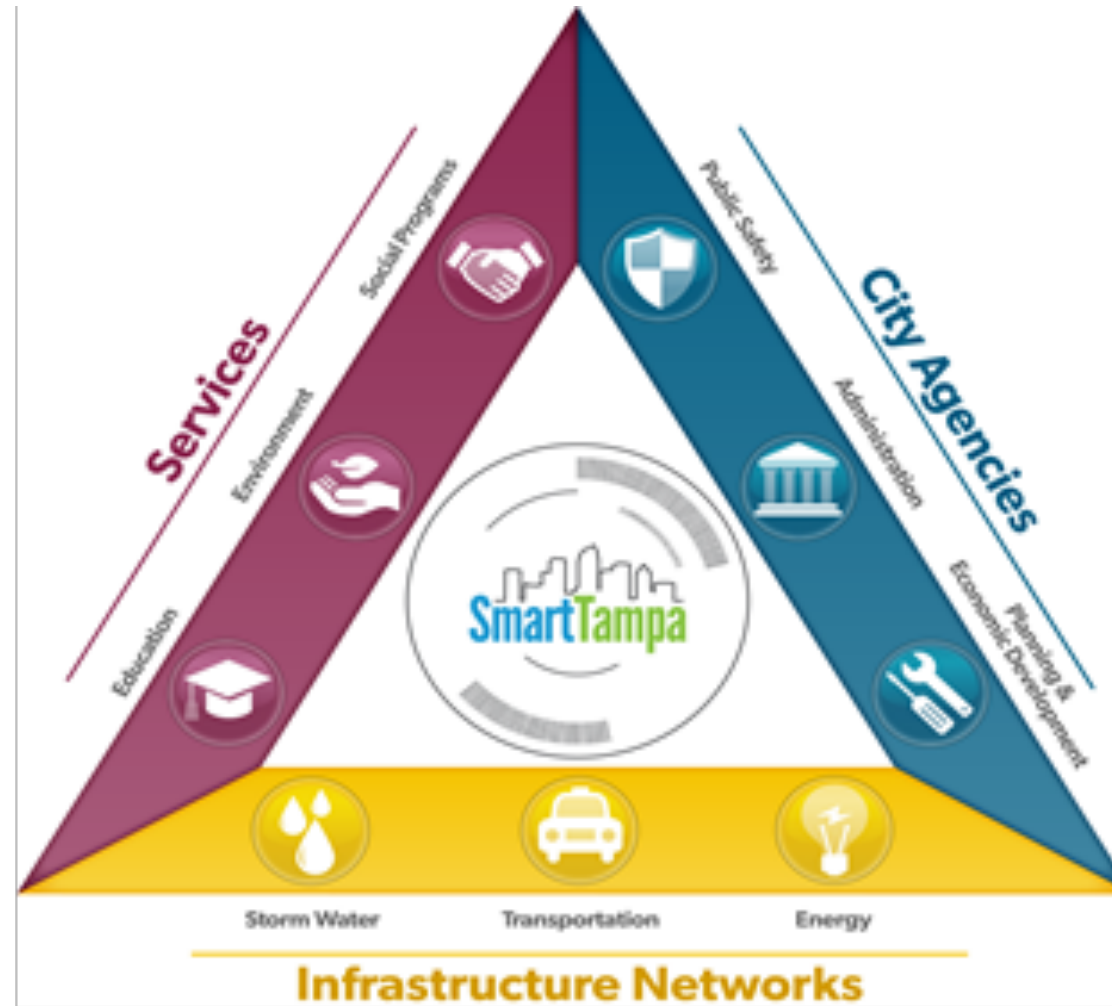
# Partners

## PUBLIC

City  
 FDOT  
 Hillsborough  
 Pinellas  
 Pasco  
 HART  
 PSTA  
 MPOs  
 Port Tampa  
 TBARTA  
 THEA  
 TIA  
 USF/CUTR

## PRIVATE

SPP, TECO, Tech  
 Data, Waze,  
 Verizon, Cisco,  
 Waycare,  
 Microsoft, Uber,  
 Lyft, CycleHop,  
 Econolite,  
 Miovision, TDP,  
 Westshore  
 Alliance, Traffic  
 Cast, TTS, AARP,  
 ZipCar, .... and  
 many more

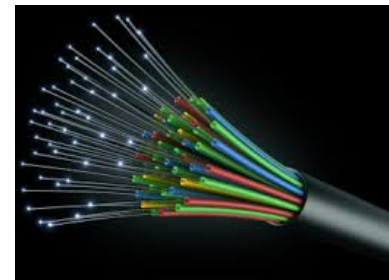


# FRAMEWORK

# Advanced Traffic Management System (ATMS)



- Traffic management system upgrade
- Three phases total
- Over 400 traffic signals
- \$40 million funding



PROJECTS

# Tampa Smart Paint Project

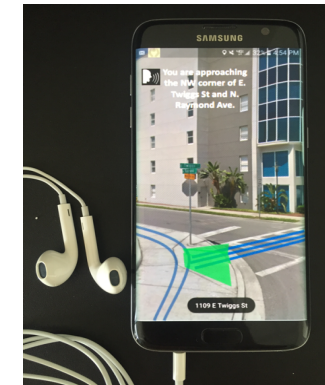
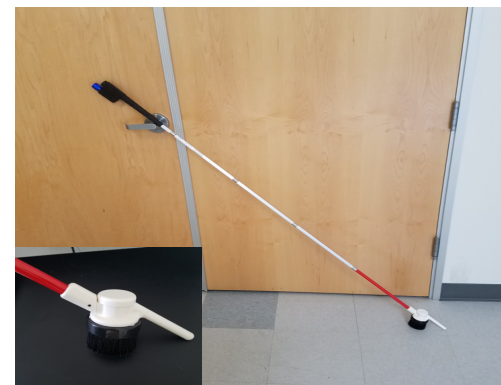
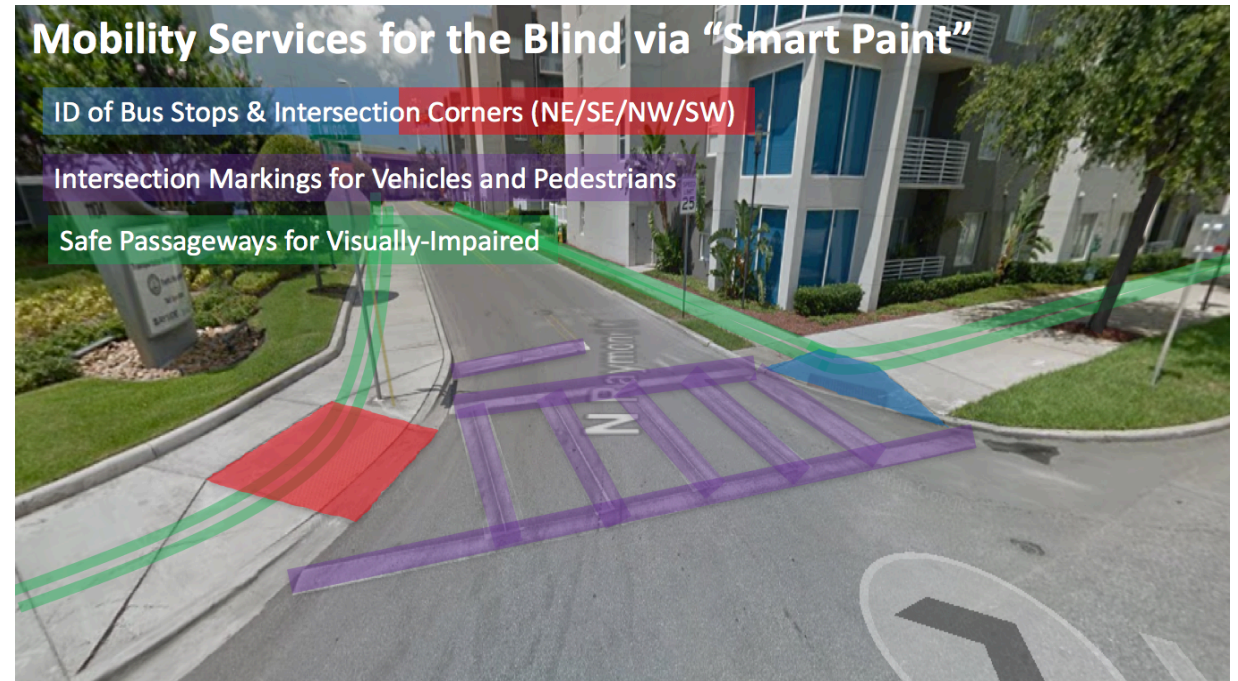


Tampa Lighthouse  
for the Blind

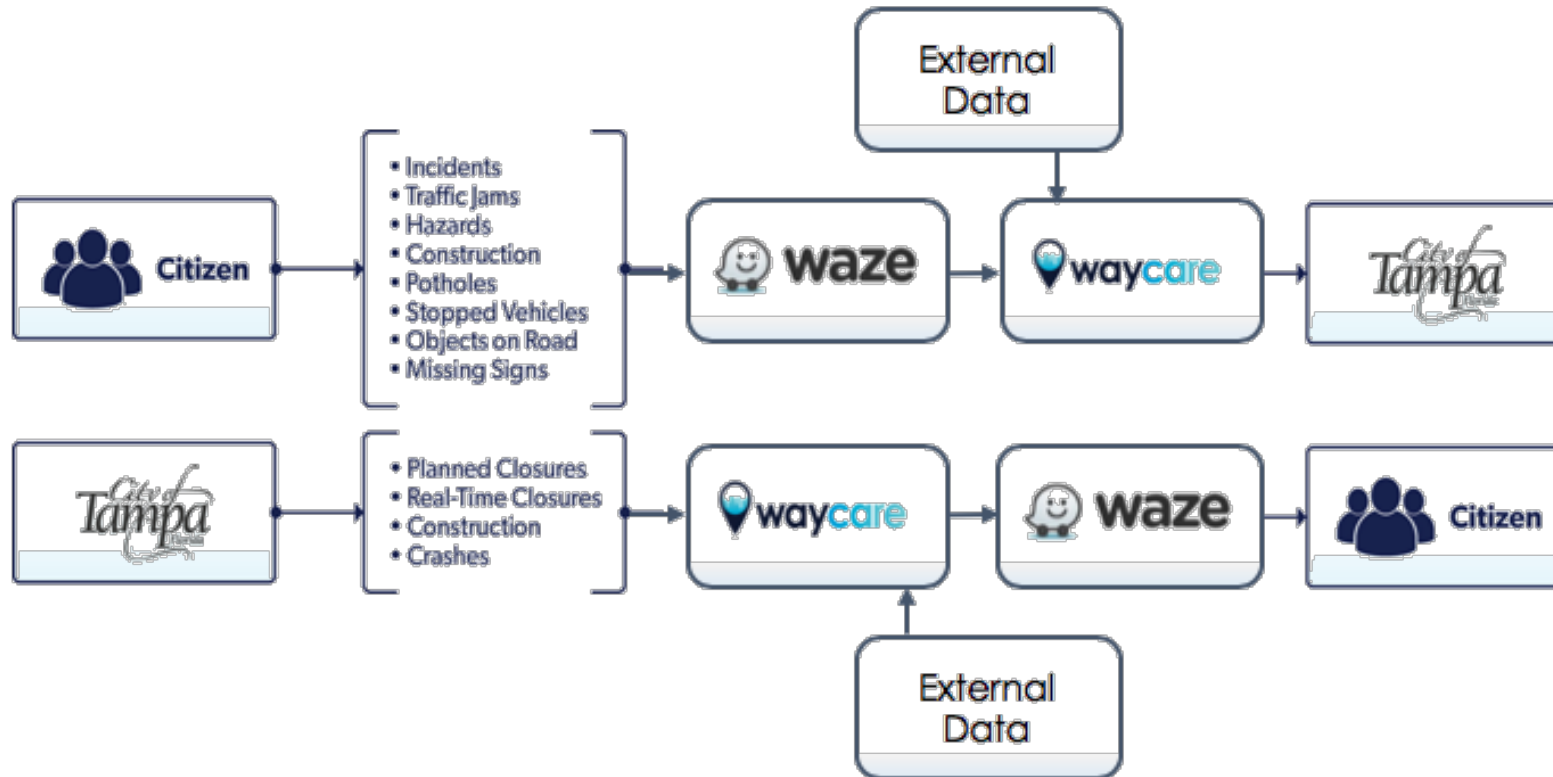


- PPA Effort
- Enhances Pedestrian Safety
- Paint w/ Embedded Messaging
- Downtown, USF Campus, South Tampa
- Future Applications
  - *Place Call on Traffic Signal*
  - *CV Notifications*
  - *Indoor Ped Navigation*
  - *AV Guidance*
  - *Work Zone Safety*

PROJECTS



# Crowd Sourced Data

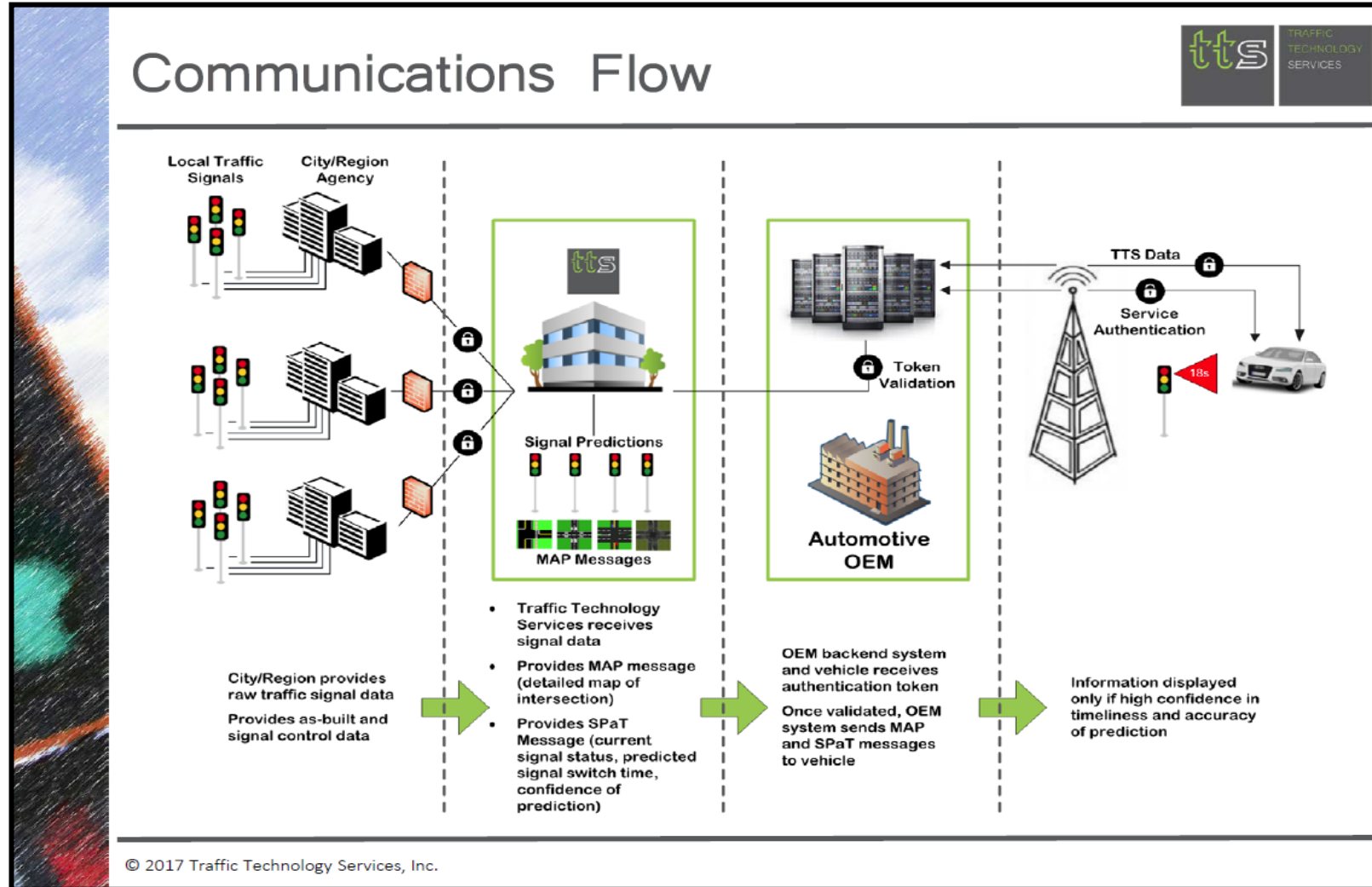


100+ cities in Waze Connected Communities Program...Tampa was 1<sup>st</sup> City in Florida

PROJECTS

# CV Demo - TTS

- Cellular-V2X
- In-vehicle Traffic Signal Data
- Safety Warnings
- Signal Change Alerts



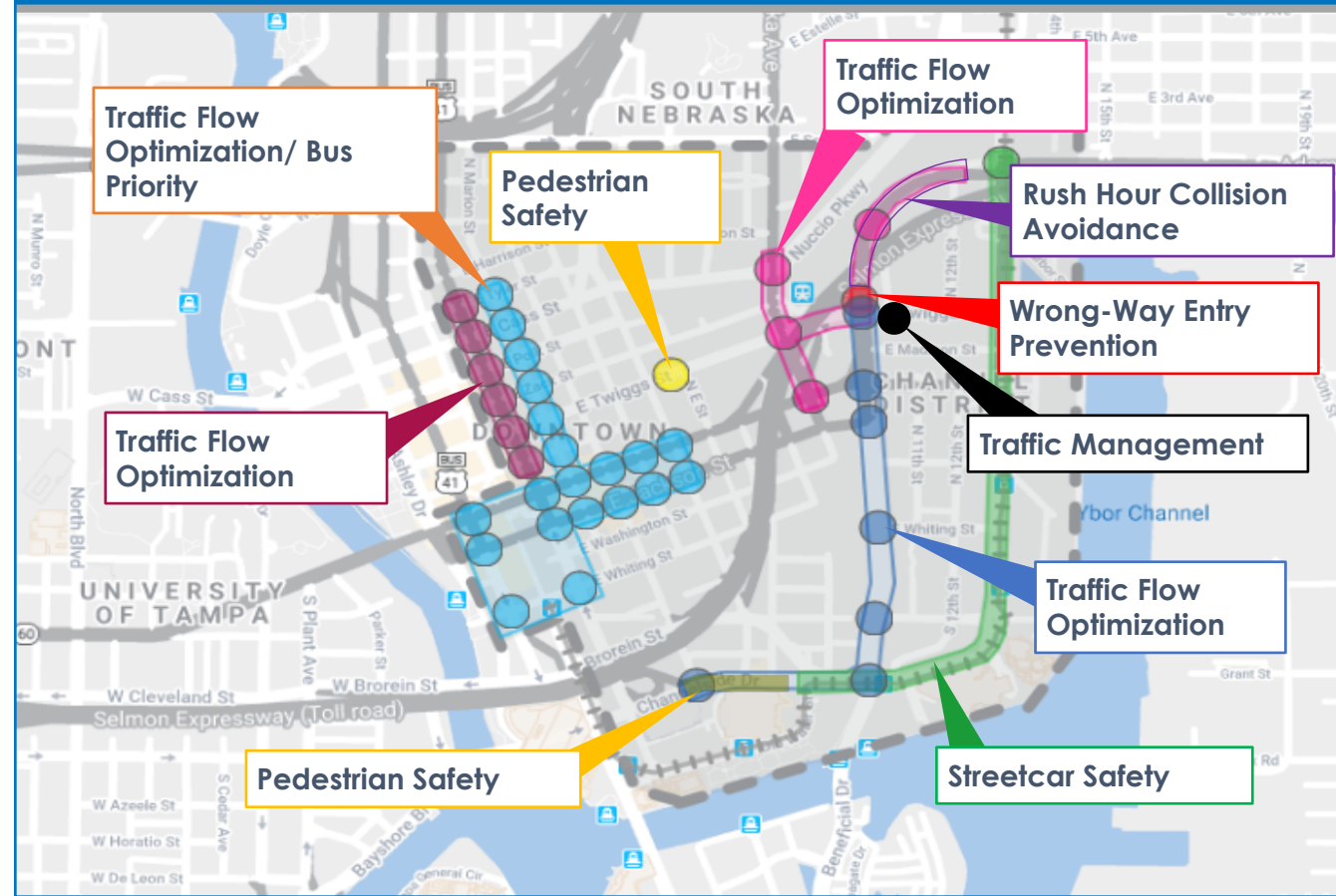
# Tampa CV Pilot



- 40 DSRC Roadside Units
- 1600 Vehicles
- 10 Streetcars
- 10 Buses
- 500 Personal Devices
- 12 V2V, V2I and V2P apps
- Detection Equipment
- Management Platform
- Agency Data

## PROJECTS

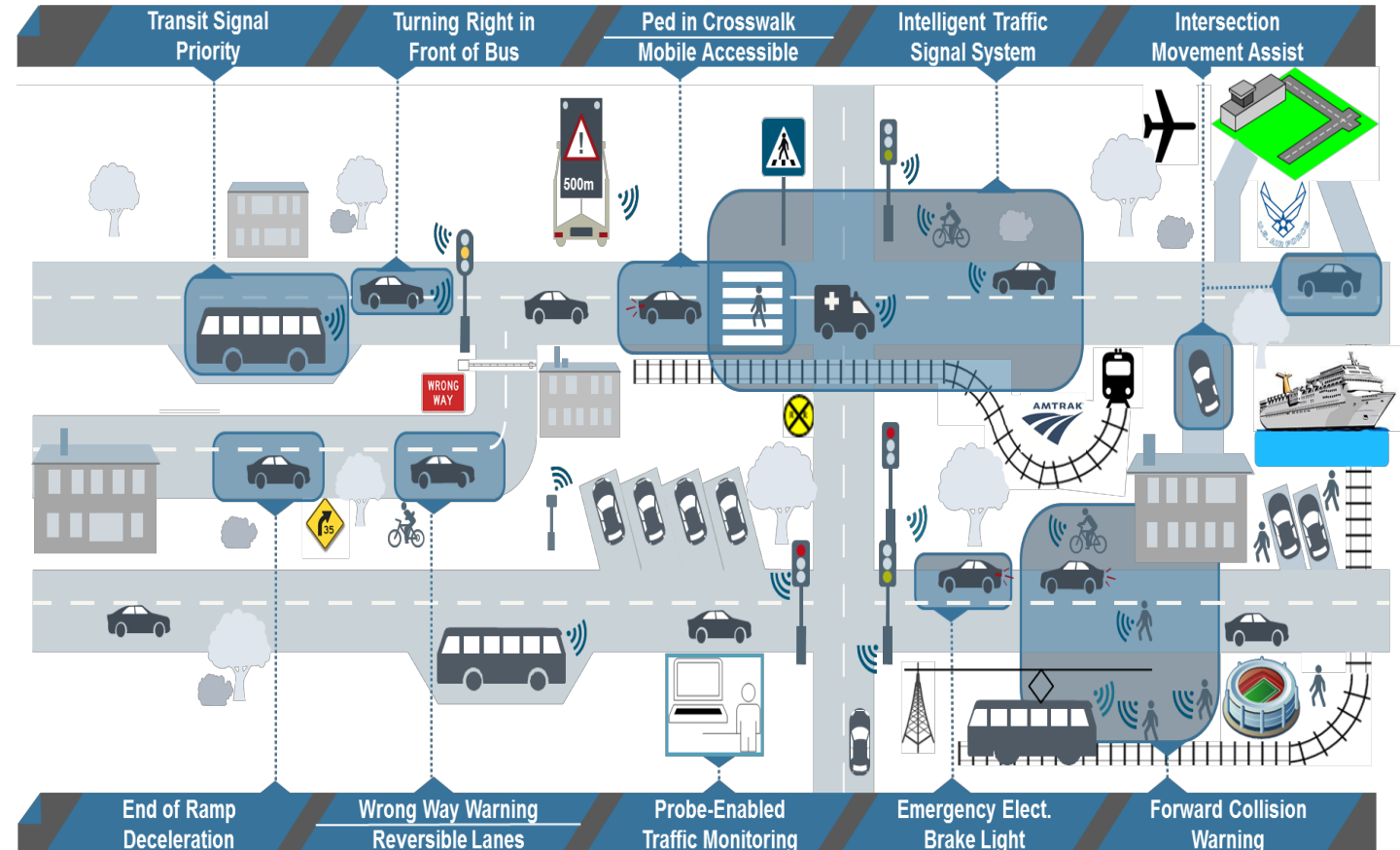
### Focused Deployment Area



# CV Pilot Overview



- Pedestrian Safety
- Traffic Management
- Transit Efficiency
- Collision Avoidance
- Wrong-Way Driver Alerts



PROJECTS

# Autonomous Vehicle Service (AV)



- HART AV shuttle service along Marion Street Transit Way
- One of 1<sup>st</sup> planned AV shuttle services in US
- Safety technology built into shuttle will reduce accidents to riders, pedestrians and bicyclists
- Sustainable introduction of AVs to Tampa



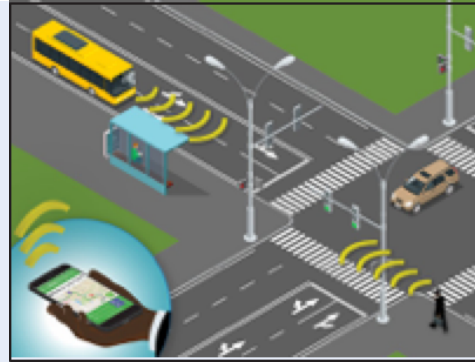


# Mobility as a Service (MaaS) Platform

EXPAND OBA  
(OneBusAway) TO MULTIPLE  
TRAVEL MODES

TRIP PLANNING TOOL

KIOSKS AND MOBILITY HUBS



“We’re interested in having OneBusAway be as useful for as many people as possible.... We are looking at how we make it more user-friendly for blind and low vision riders.”  
– Alan Borning, Computer Science and Engineering Professor involved in creating original OneBusAway App

## WHY DOES TAMPANEED IT?



Diversify Mode Options



Reduce Single-Occupant Vehicle Trips



Manage Traffic Congestion

## WHAT ARE THE BENEFITS?



Lower Software Costs



Benefits Vulnerable Populations



Enhanced Mobility Services & Trip Planning

## CONCEPTS

“OneBusAway has had a real-world impact and will definitely make people’s lives easier in terms of accessing transit.” – Sean Barbeau, University of South Florida Center for Urban Transportation Research

# Integrated Corridor Management (ICM)



CV INFRASTRUCTURE

EMERGENCY VEHICLE  
PRE-EMPTION & TRANSIT  
SIGNAL PRIORITY

INCIDENT MANAGEMENT

CONGESTION REDUCTION  
& ROUTE GUIDANCE

TRAVELER INFORMATION

PREDICTIVE ANALYTICS

## WHY DOES TAMPA NEED IT?



12<sup>th</sup> Worst Congestion in US



High Crash Rates



Fosters Economic Development &  
Enhances Mobility

## WHAT ARE THE BENEFITS?



Anticipated B:C = 9.7:1



Reduce Emissions



Real Time Demand and Network  
Optimization

## CONCEPTS

# Key Achievements

---

Project	Achievement	Partners
CV Pilot	1 <sup>st</sup> Suburban Pilot in the US	THEA, City, USF, HART, FDOT, FHWA
Smart District	1 <sup>st</sup> WELL Certified Area in FL	SPP, City
Smart Paint	1 <sup>st</sup> Deployment in US	City, HART, Lighthouse, USF, OSU
Waze	1 <sup>st</sup> City in Florida on CCP	City

***Tampa Informs the State-of-the-Practice***



Vik Bhide

[Vik.Bhide@tampagov.net](mailto:Vik.Bhide@tampagov.net)

**(813) 274-8066**